


# 13 08 NORTH ELSTON



SALT DISTRICT  CHICAGO

41.905848 °N -87.659899 °W 





# A New Destination

*WITH AN OLD SOUL*

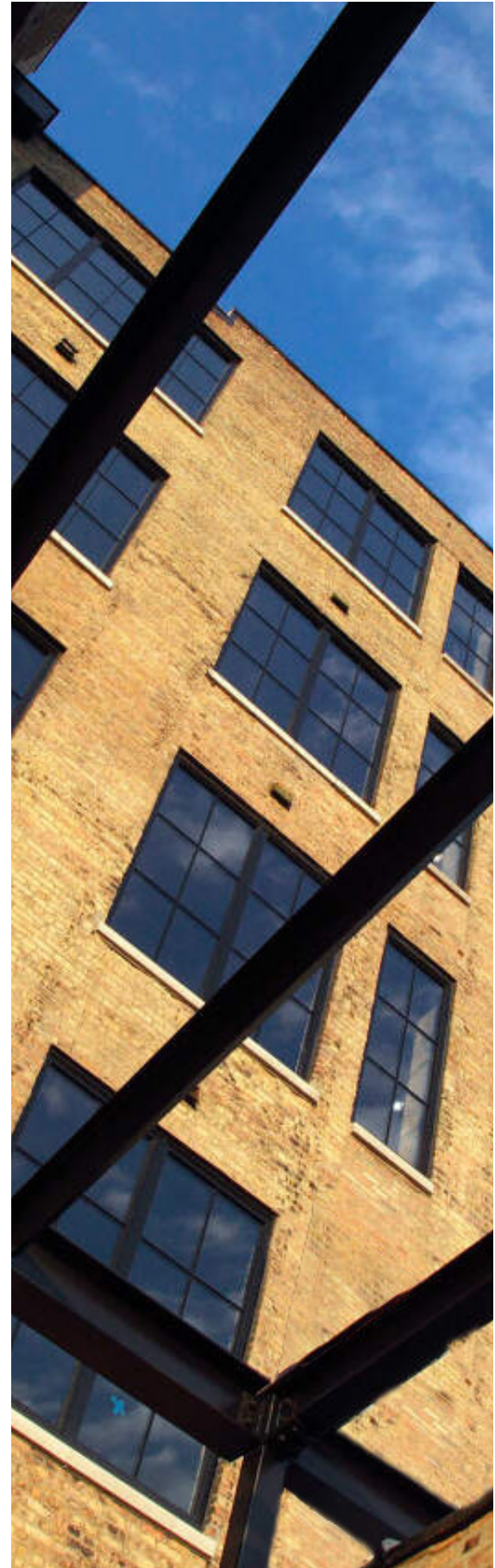


# Icon in the Making

*FIRST OF ITS KIND OFFERING IN THE NEAR NORTH OFFICE MARKET*




1308 North Elston, a former light-fixture factory, has been transformed into a world-class working environment. With full floor and half floor opportunities in a high profile building visible to 400K+ commuters daily, this Class-A office location is sure to become an iconic landmark along the Kennedy Expressway.





High profile building in an easily accessible location away from the congestion of downtown.

N HALSTED STREET



**84,163**  
Riders Per Day

ON UNION PACIFIC NORTH & NORTHWEST LINES




ENTERTAINMENT/  
CONCERT VENUE

**13** NORTH  
**08** ELSTON

**Metra**

Morton Salt  
N ELSTON AVENUE

**90** **94**



**325,200**  
Cars per Day

ALONG I-90/94



# A Breath of Fresh Air

Large block availability with up to three contiguous floors and thoughtfully planned amenities create an opportunity for a wide range of tenants to spread their wings and find inspiration away from the congestion of downtown.

## Building Highlights

- + Full and half floor opportunities
- + Spectacular 32' glass lobby
- + 12-14 foot ceilings
- + Exposed timbers
- + Potential to accommodate 50+ car parking
- + Private landscaped courtyard featuring 1308, a restaurant offering new American cuisine open for lunch and dinner
- + Easily accessed via car / ride sharing or bike
- + 30%+ more square footage at the same price point as the West Loop / Fulton Market
- + Core and shell delivery or full turn-key available
- + Branding opportunity along Elston Avenue facing The Salt Shed, a massive indoor / outdoor entertainment venue



**73,952**  
Riders per Day

ON CTA BLUE LINE







# Wide Open Spaces

*LIGHT FILLED, DRAMATIC  
BRICK & BEAM OFFICE SPACE*

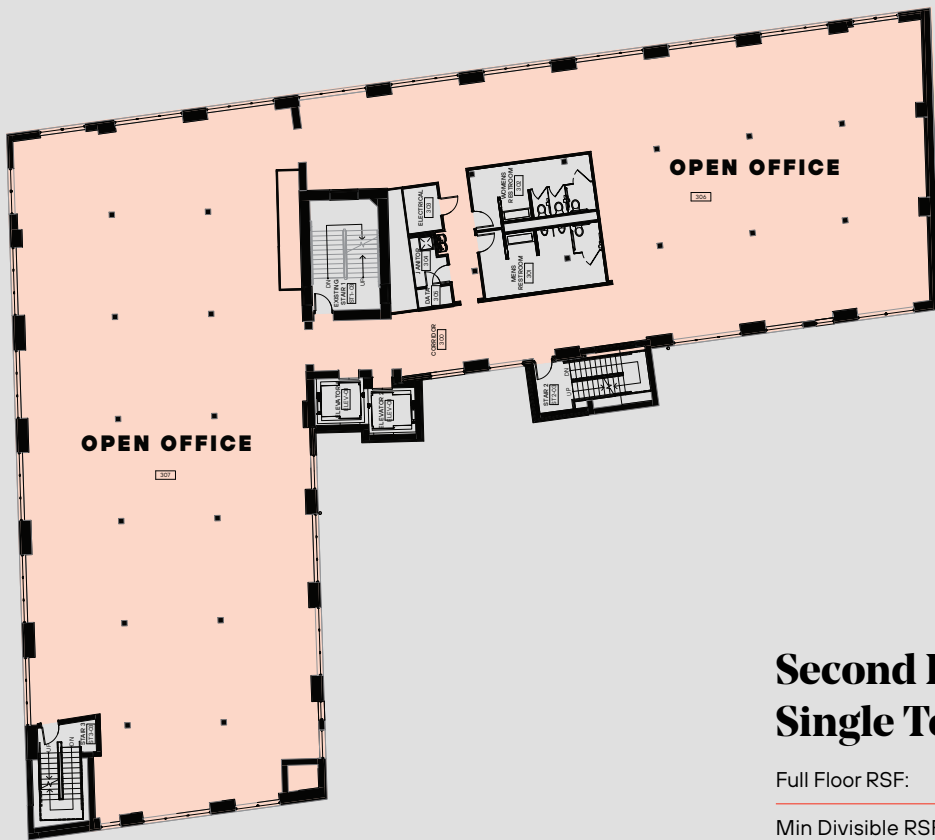
## **Building Facts**

Building Height:	6 Stories
Year Built:	1914
Year Rehabbed:	2019
Building Type:	Office
Building Class:	A
Building Size:	72,000 SF
Typical Floor Size:	12,000 SF
Ceiling Heights:	12-14 FT
Parking:	Available





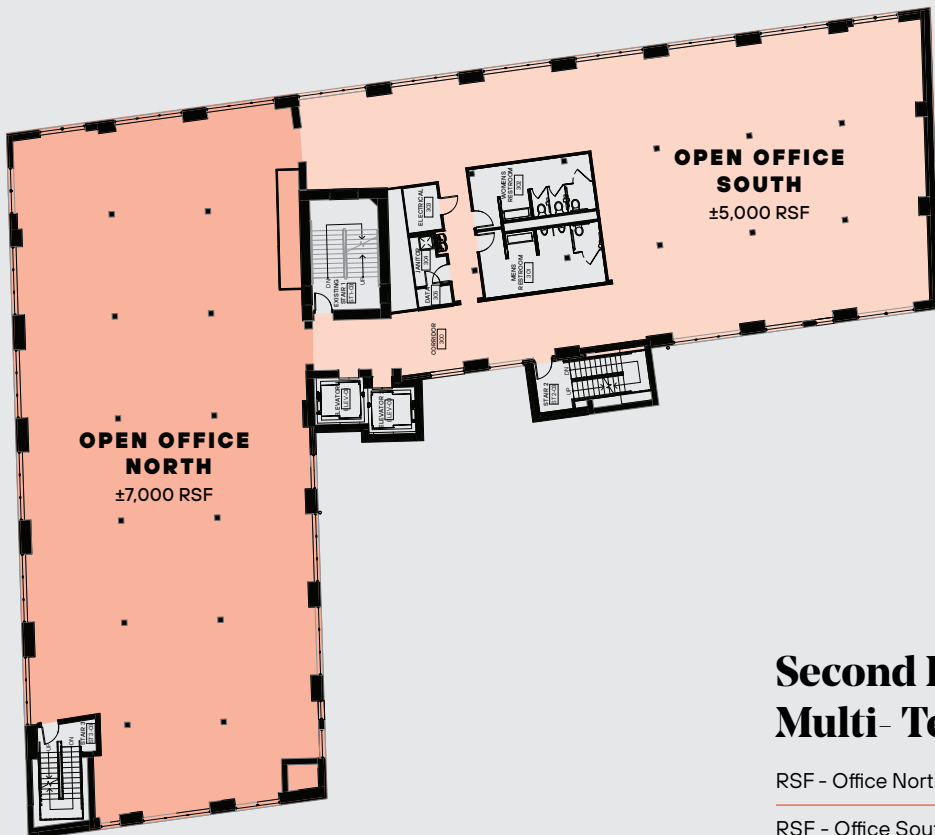




## Second Floor Single Tenant Plan

Full Floor RSF: ±12,000

Min Divisible RSF: ±5,000



## Second Floor Multi- Tenant Plan

RSF - Office North: ±7,000

RSF - Office South: ±5,000

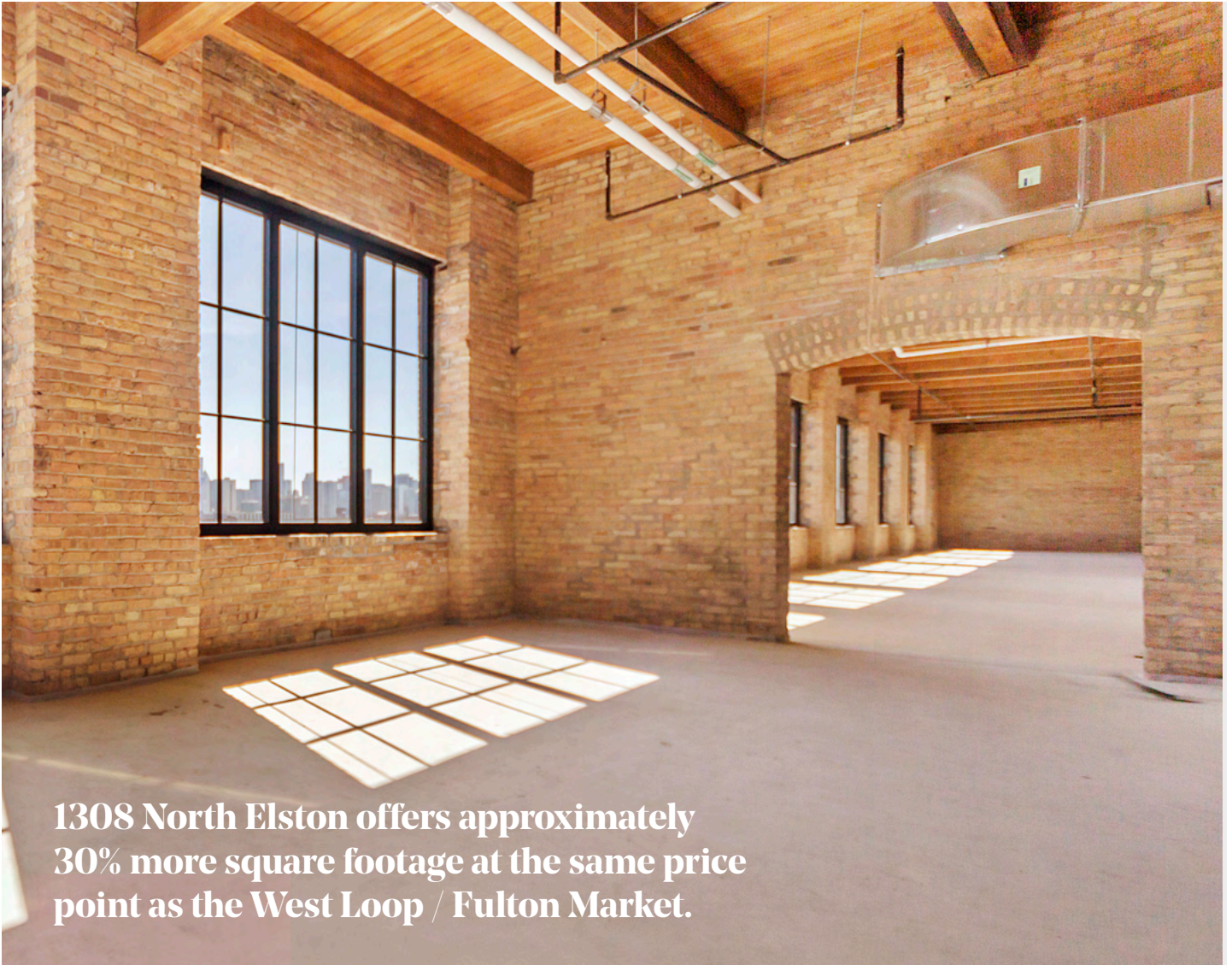




# Breathing Room

ROOM TO SPREAD OUT AND  
PRIORITIZE PERSONAL SPACE





**1308 North Elston offers approximately 30% more square footage at the same price point as the West Loop / Fulton Market.**





# Exceptional Amenities & Outdoor Space

1308 North Elston features a private landscaped courtyard with a unique where tenants can safely socialize, work, dine, and relax.



*The building is located on Elston Avenue, directly across the street from the iconic Morton Salt building. The main entrance is on the south side of the building at Elston & Potomac.*

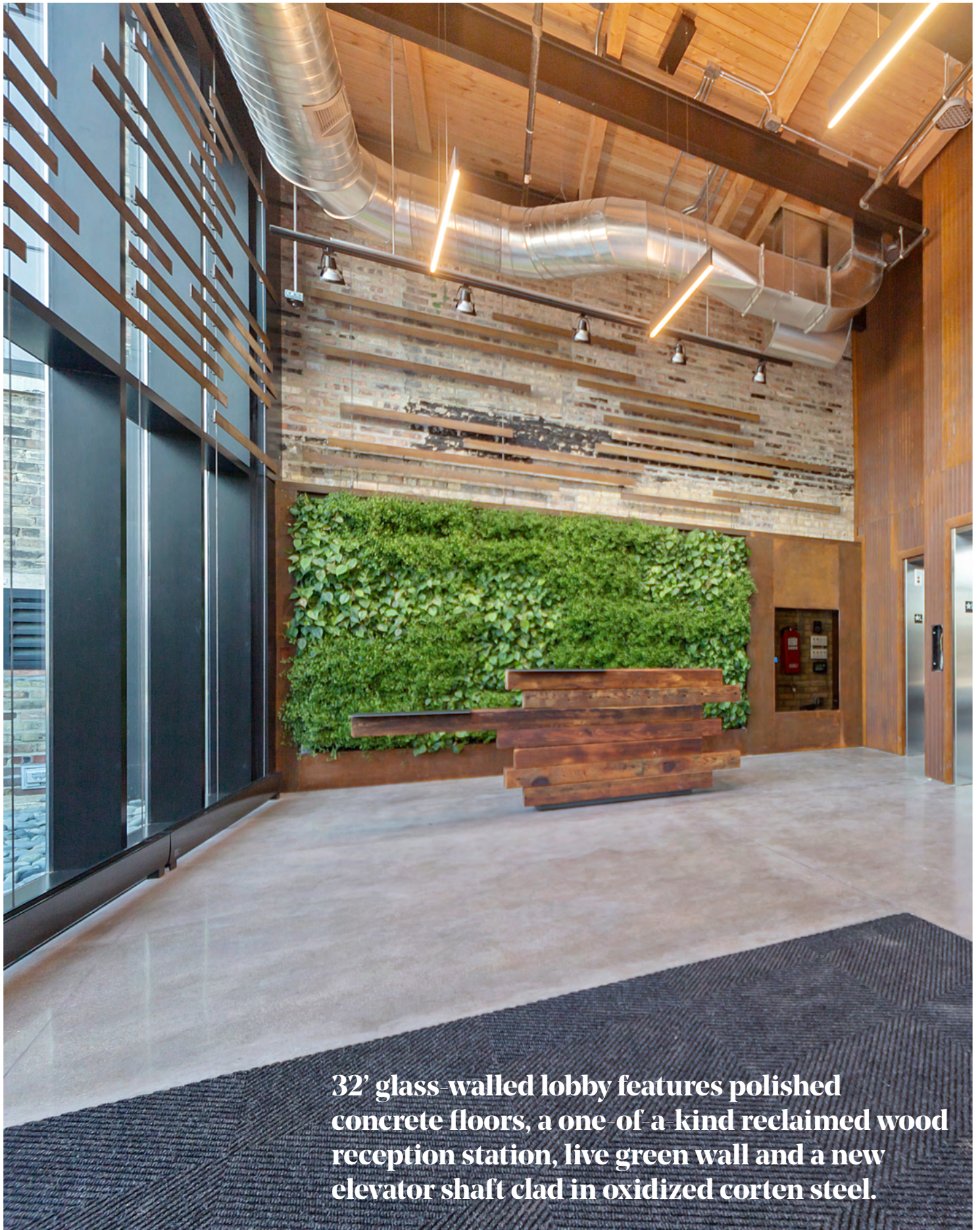
A unique entry sequence leads visitors to spectacular 32' glass walled lobby. The building's walled and landscaped courtyard features an annex building occupied by 1308, a restaurant featuring vegan / vegetarian friendly new American cuisine providing a private outdoor oasis.



1308

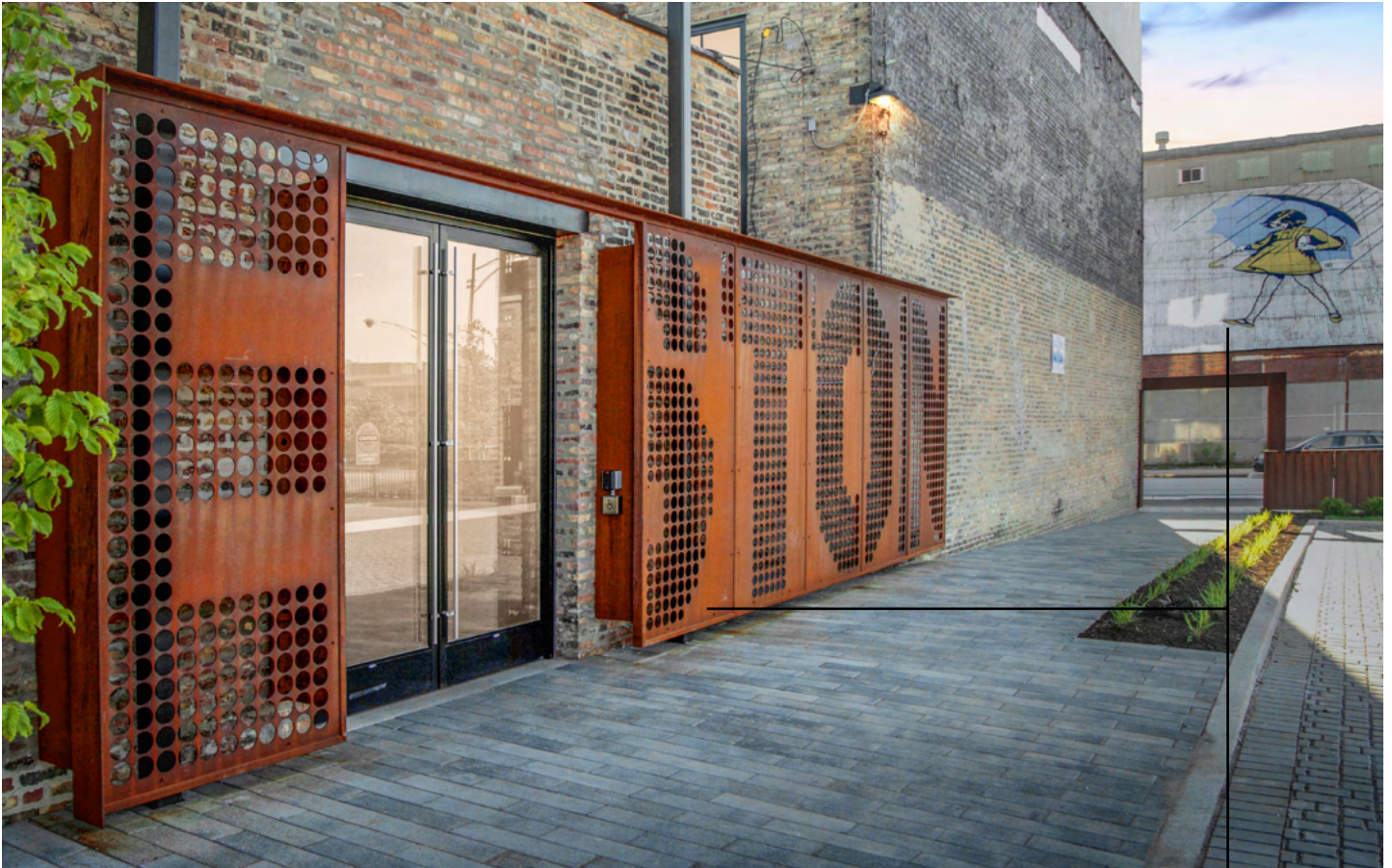
*A SpeakEatery located in the new Salt District touting a dining experience with a fresh twist on new American cuisine.*





**32' glass-walled lobby features polished concrete floors, a one-of-a-kind reclaimed wood reception station, live green wall and a new elevator shaft clad in oxidized corten steel.**



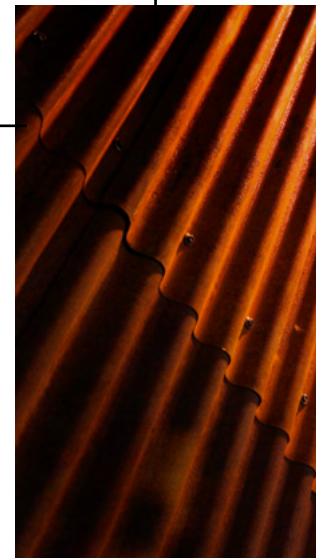
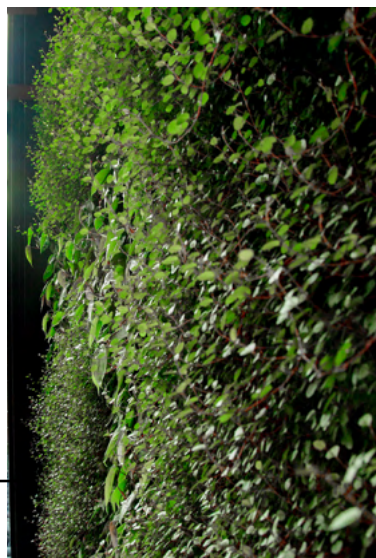


## Building Finishes

△ The oxidized corten steel cladding on the new elevator shaft and entryway is a nod to the corrugated metal roof of the adjacent Morton Salt building.



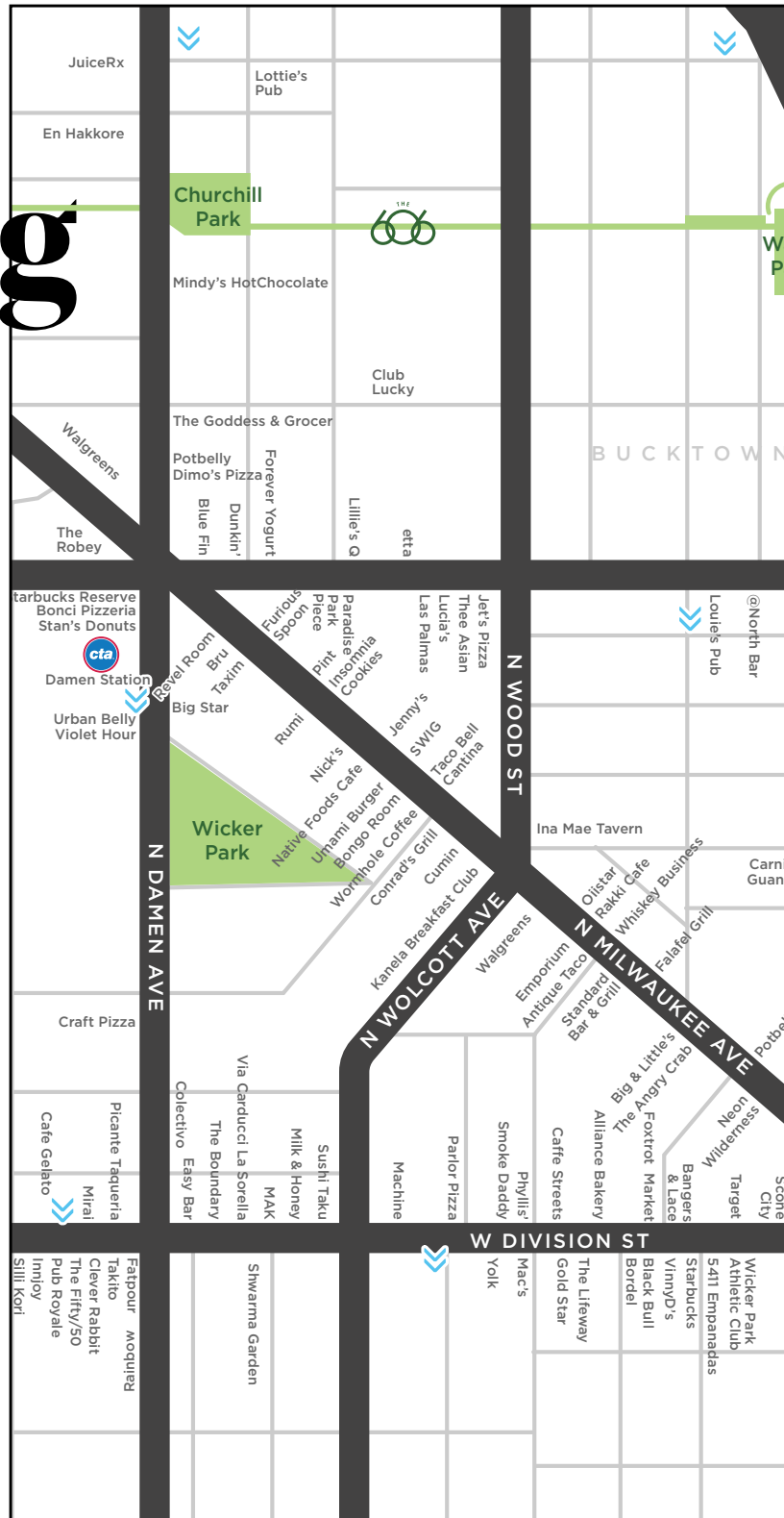
△ Floor-to-ceiling glass wall (above) and decorative living wall (right) greet visitors in the building's lobby.





# Close to Everything

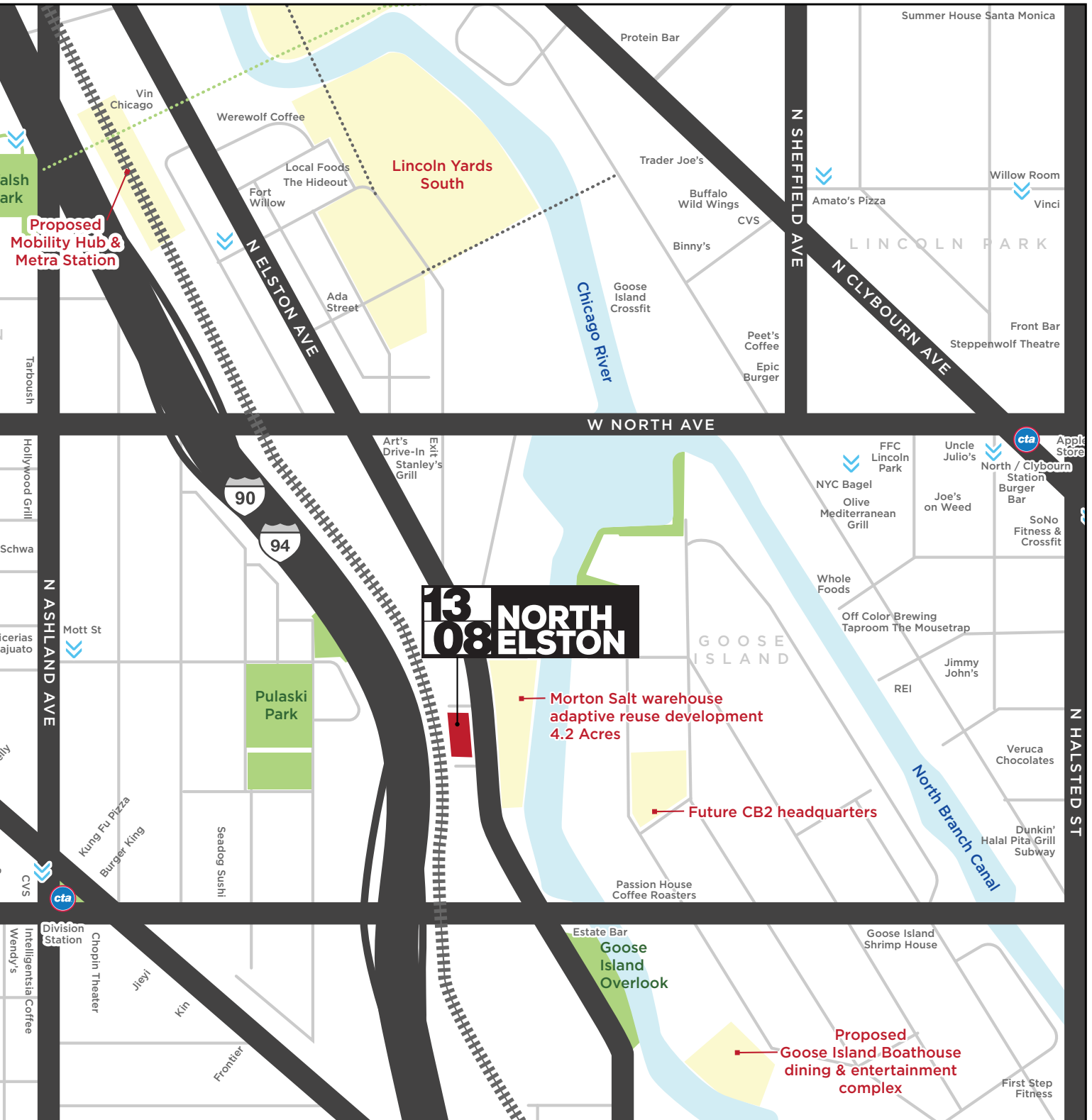
MODERN OFFICE SPACE,  
5 MINUTES FROM HOME



1308 North Elston is an unbeatable location with unrivaled access and visibility. Positioned in the Salt District at the center of a thriving millennial talent pool, the building is adjacent to some of the city's most desirable residential neighborhoods. 1308 North Elston is easily accessible to the entire city and northern & western suburbs via I-90/94, CTA, and Metra.







## Nearby Transit

### COMMUTER RAIL

Metra Clybourn Station	2 min drive
Ogilvie Transit Center (Metra)	5 min drive

### CTA 'L' STATIONS

Division CTA Blue Line	12 min walk
Chicago CTA Blue Line	15 min walk
North & Clybourn Red Line	17 min walk

### AIRPORTS

Midway International Airport	20 min drive
O'Hare International Airport	25 min drive





# Average Rideshare Cost from 1308 North Elston

AVERAGES BASED ON POOL AND REGULAR RIDES ON LYFT & UBER\*



\*Averages do not take into account surge or promotional pricing. Drive times are based on Google. Costs and travel times are estimates only, actual cost and drive times may vary.





#### ABOUT THE DEVELOPER

### **Farpoint Development**

Farpoint Development is a Chicago-based real estate development firm founded in 2016 by the founding members of the successful real estate development company Sterling Bay. The Farpoint development team has nearly 100 years combined experience with the rehabilitation, redevelopment and adaptive reuse of severely compromised buildings in the Chicago area, including Hillshire Brands global headquarters at 400 S. Jefferson, Google, Inc.'s Midwest headquarters at 1000 W. Fulton, and the rehabilitation of the historic 12-story terra-cotta office building at 300 W. Adams.



### **Greco/DeRosa Investment Group**

As a subsidiary of The Greco Companies, Greco/DeRosa Investment Group focuses primarily on real estate investment and financing. Having built an impressive portfolio of retail, mixed use, and industrial properties, GD has been a welcome partner to Farpoint Development on several new and exciting projects.

Greco/DeRosa Investment Group is an affiliate of the following companies: Greco PG5 Investments, GSI Financing, LLC, Greco Reggi Development, G4 Development Group, LLC.







# 13 08 NORTH ELSTON

FOR LEASING INFORMATION CONTACT

**Abby McFadyen**

312.316.1583

abby@mad-rose.com

**Adam Pines**

847.814.1049

adam@mad-rose.com

 **MADISON  
ROSE**

© 2023 All information supplied is from sources deemed reliable and is furnished subject to errors, omissions, modifications, removal of the listing from sale or lease, and to any listing conditions, including the rates and manner of payment of commissions for particular offerings, the terms of which are available to principals or duly licensed brokers. This information may include estimates and projections with respect to future events, and these future events may or may not actually occur. Such estimates and projections reflect various assumptions concerning anticipated results. While we believe these assumptions are reasonable, there can be no assurance that any of these estimates and projections will prove to have been correct. Therefore, actual results may vary materially from these forward-thinking estimates and projections. Any square footage dimensions set forth are approximate.